

HAVE FUN WHILE LEARNING AND PLAYING BASEBALL!

FUNDAMENTAL SKILLS TAUGHT:

Each camper will be worked with on an individual basis to improve his/her skill in the following areas:

- ★ Hitting
- ★ Fielding
- ★ Bunting
- ★ Throwing
- ★ Pitching
- ★ Baserunning
- ★ Catching

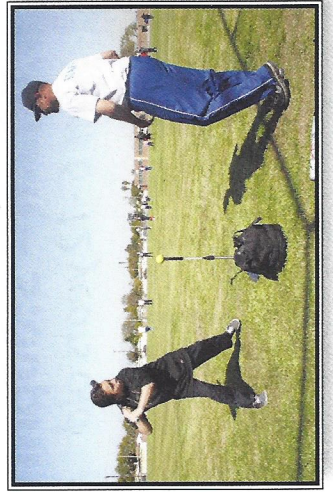


WHAT TO BRING:

- ★ Bat
- ★ Glove
- ★ Cap
- ★ Baseball Shoes or Sneakers
- ★ Shorts or Long Pants
- ★ Sunscreen
- ★ Plastic Water Container (**A MUST!**)
- ★ Your Own Drink
- ★ Lunch
- ★ ALL EQUIPMENT SHOULD HAVE PLAYER'S NAME ON IT

CAMP FACTS:

- ★ Players Grouped by Age
- ★ 4 Regulation Games
- ★ Great Fun and New Friends



WHEN & WHERE TO GO:

Camp Hours: 9:00am — 3:00pm

Report to **Moon Park Discovery Baseball Field** - 1350 Ewing Road (Rain or Shine). Players **MUST** be picked up promptly at 3:00pm.

INSTRUCTIONAL STAFF:

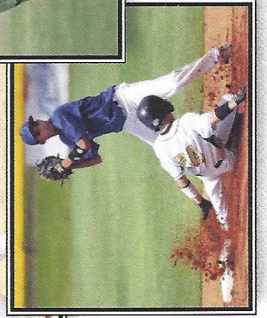
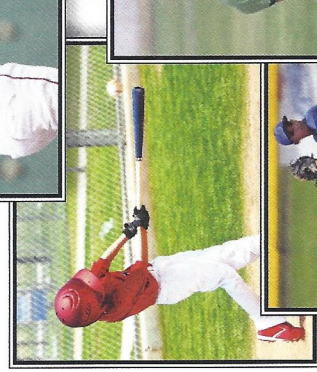
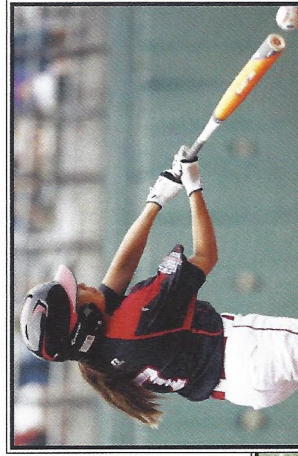
- ★ Local High School Coaches
- ★ Local College Players
- ★ Local High School Players

CAMP DIRECTOR:

RAY BOSETTI

412-264-4721

raybosetti@Verizon.net



MEDICAL RELEASE FORM

(Please Print)

(Please Print)

Special Medical Information

I attest to verify that my child, _____ is physically able to participate in your camp activities. His/her physical condition has been verified by a licensed medical doctor. I have adequate medical coverage, insurance, and give my child permission to attend the Western Pennsylvania Hitting or Baseball Camp. I voluntarily assume all risks of any accident or injury to my child which may arise out of his/her participation in this camp, hereby releasing Western Pennsylvania Baseball Camp and all personnel associated with this program from liability that my result from their participation.

